

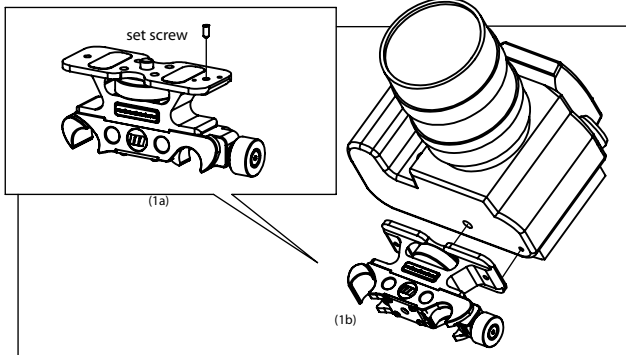
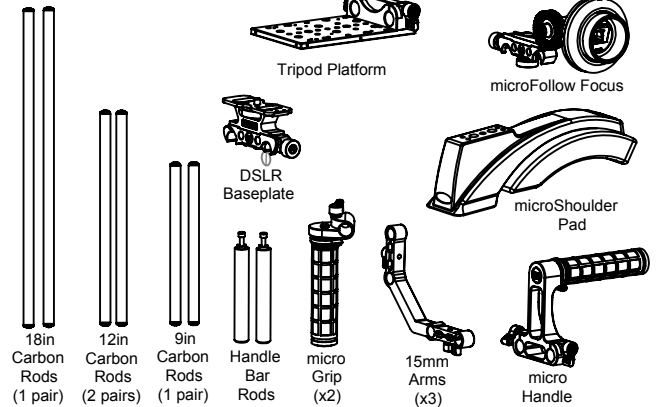


**Company:** REDROCK MICRO  
**Title:** DSLR 2.0 Setup Guide  
**Scene:** DSLR Field Bundle Assembly Guide

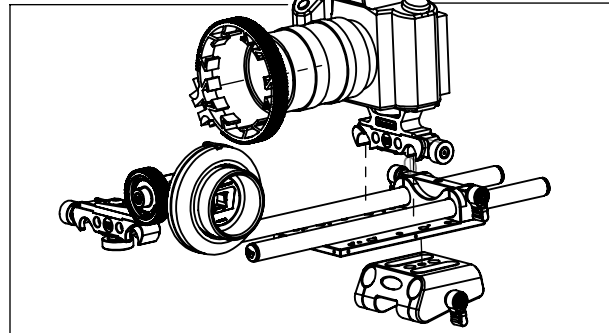
**Pages:** 1 of 1

**Date:** 12/16/09

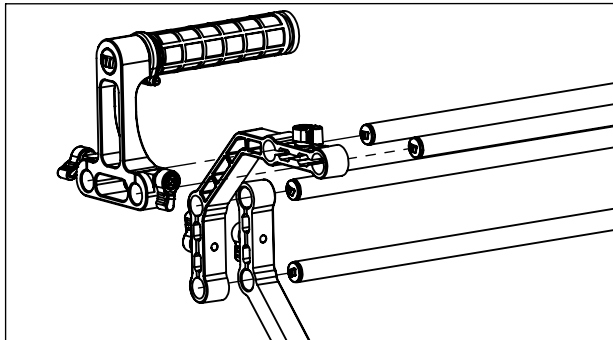
**CAST REQUIRED:**



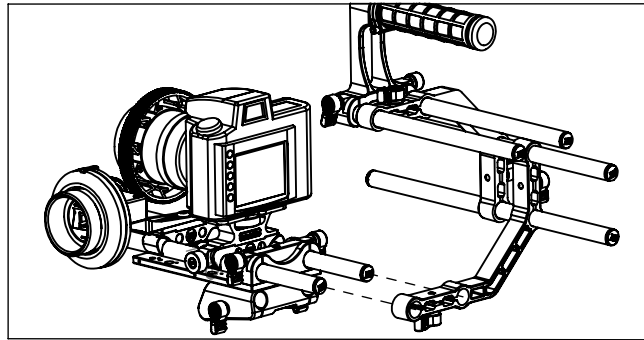
- (1a) Add Camera specific set screw to DSLR Baseplate  
 (1b) Attach Camera to DSLR Baseplate



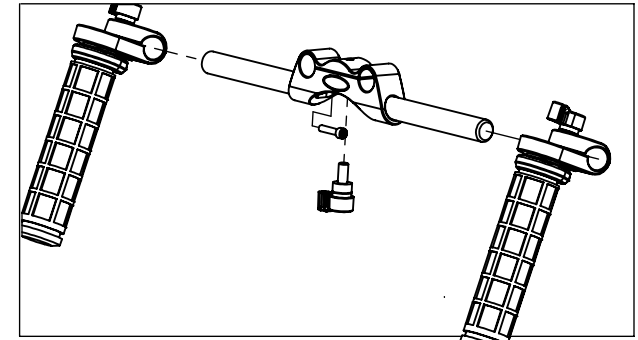
- (2a) Attach 9in Rods to Tripod Platform  
 (2b) Attach Focus Ring to camera  
 (2c) Attach microFollow Focus to 9in rods and align with Focus Ring



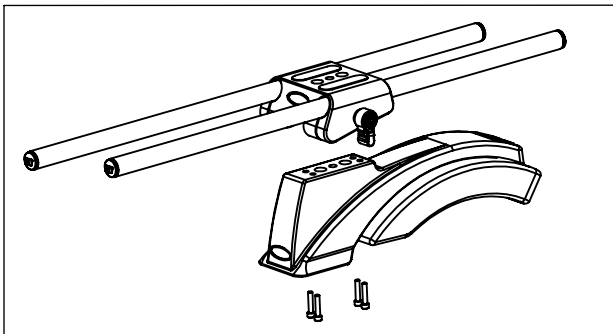
- (3a) Insert 12in Rods into 15mm Arms as shown  
 (3b) Insert 9in Rods to build and add microHandle



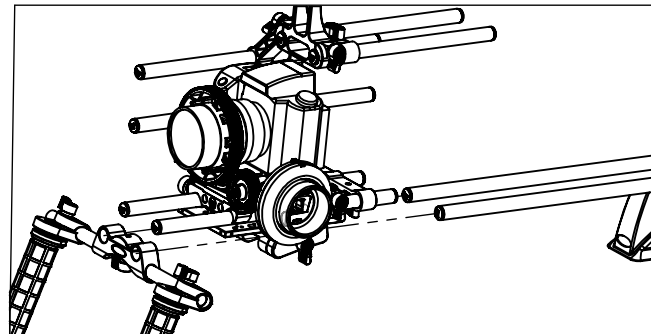
- (4) Attach Cage build to Camera / Tripod Platform Build



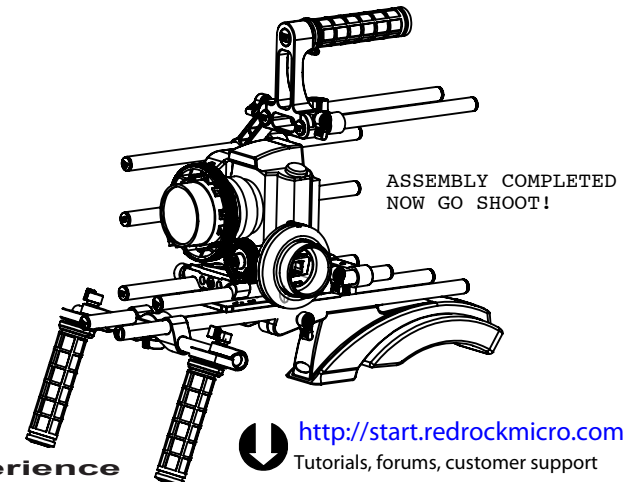
- (5a) Attach rods to Clamp using screws and add Knob  
 (5b) Attach Grips to Handlebar Assembly



- (6a) Attach microShoulder Clamp to Shoulder pad using screws  
 (6b) Attach 18in Rods to the microShoulder Clamp



- (7) Attach microShoulder Mount Assembly to Handlebar by threading 2nd microShoulder Clamp attached to Tripod Platform Assembly



create the cinema experience

<http://start.redrockmicro.com>  
 Tutorials, forums, customer support