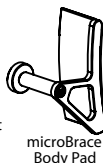
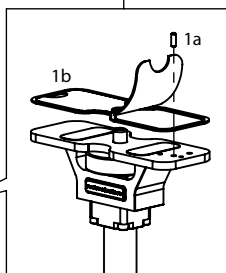
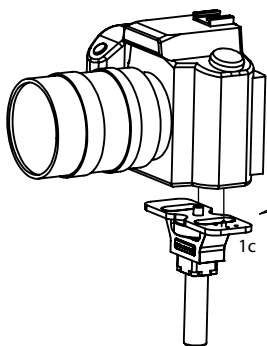


# CAST REQUIRED:

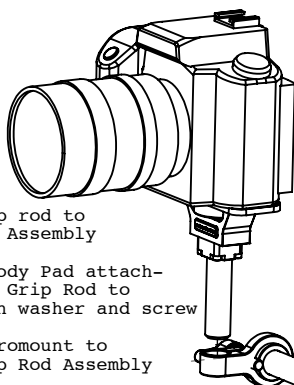


1



(1a) Attach camera specific set screw to DSLR Baseplate. Kit comes with Canon and Nikon set screws  
 (1b) OPTIONAL LIP PAD Assembly Attach Optional Lip Pad by aligning pad with Baseplate. Once aligned and set, remove center  
 (1c) Once Camera Set Screw is in place, attach camera to DSLR Baseplate Assembly

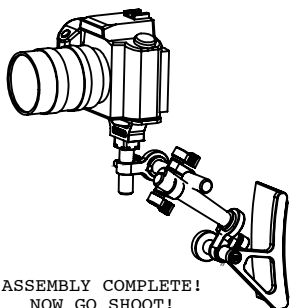
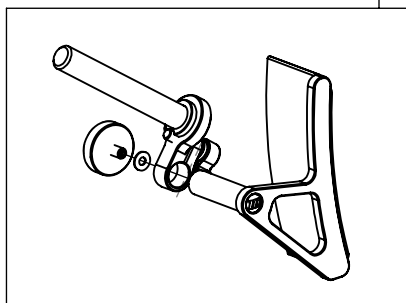
2



(2a) Attach Grip rod to Camera/Baseplate Assembly

(2b) Assemble Body Pad attachment. Attach 4" Grip Rod to Body Pad. Attach washer and screw

(2c) Attach micromount to microBrace / Grip Rod Assembly



ASSEMBLY COMPLETE!  
NOW GO SHOOT!

