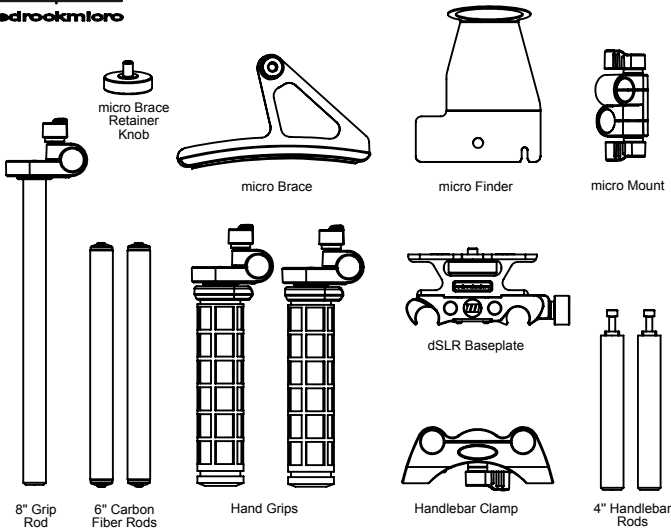
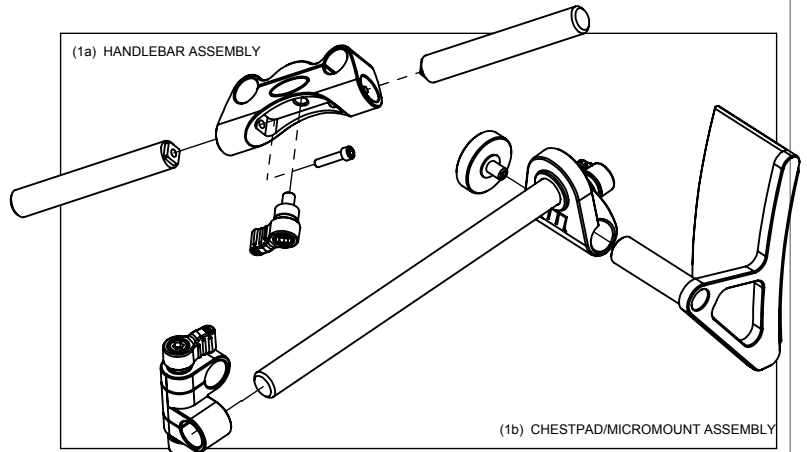




## CAST REQUIRED:



(1a) HANDLEBAR ASSEMBLY

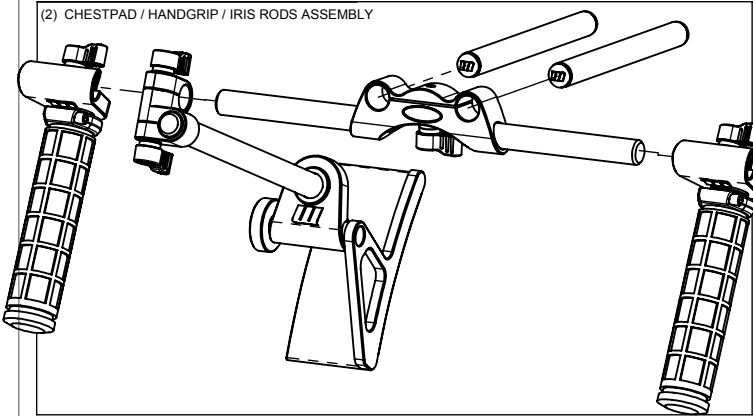


(1b) CHESTPAD/MICROMOUNT ASSEMBLY

## ① Steps needed for Handlebar / Chest Pad Assembly

- 1a: Use screws to attach 4" rods to handlebar clamp.  
 Attach blue knob.  
 1b: Attach microBrace and microMount to 8" rod.

(2) CHESTPAD / HANDGRIP / IRIS RODS ASSEMBLY

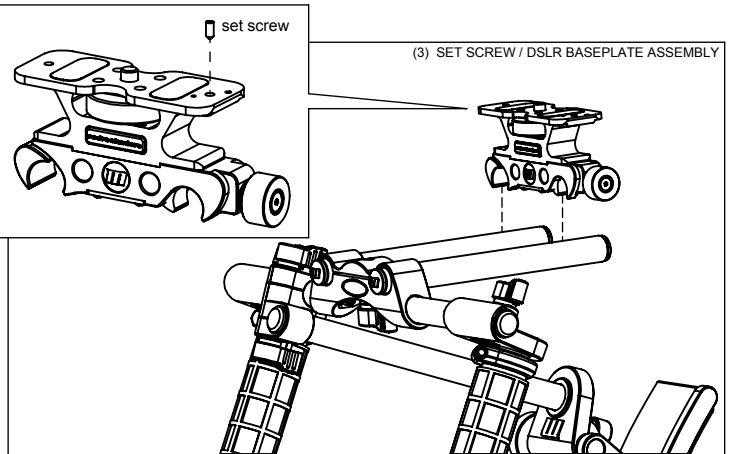


## ② Steps needed for microBrace / HandGrip / Iris Rod Assembly

- 2a: Insert 6" rods into handlebar clamp.  
 2b: Slide chestpad assembly into 4" handlebar clamp.  
 3c: Attach handgrips to the handlebar rods.

set screw

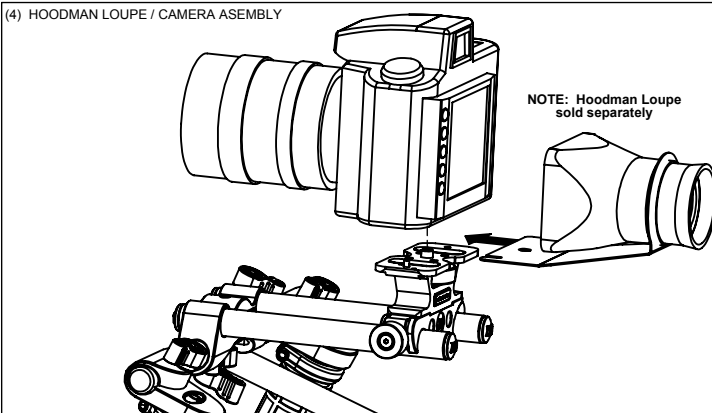
(3) SET SCREW / DSLR BASEPLATE ASSEMBLY



## ③ Steps needed for the Set Screw / dSLR Baseplate Assembly

- 3a: Attach appropriate set screw for camera to baseplate  
 3b: Attach dSLR baseplate to the 6" rods

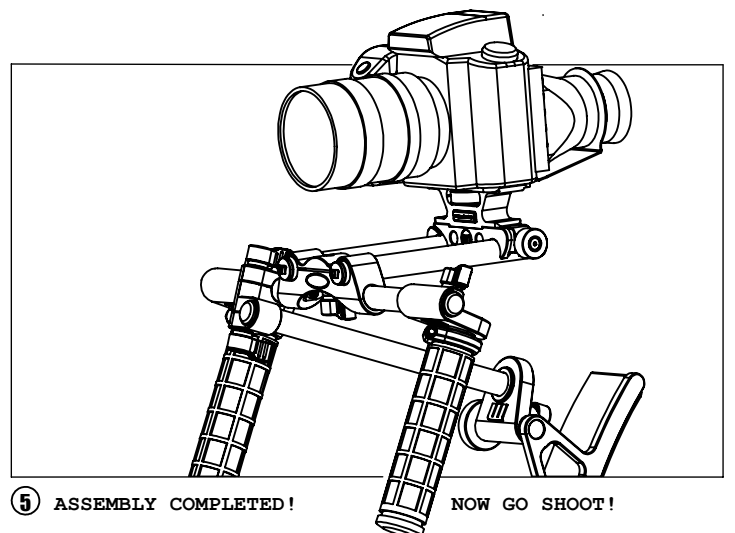
(4) HOODMAN LOUPE / CAMERA ASSEMBLY



NOTE: Hoodman Loupe  
 sold separately

## ④ Steps needed for Hoodman Loupe / Camera Assembly

- 4a: Assemble Hoodman Loupe accessory (see setup guide for hoodman assembly)  
 4b: Attach camera to microFinder / dSLR baseplate.  
 HELPFUL HINT: loosely attach camera to baseplate screw before sliding microFinder into place. once microFinder is in place, tighten screw on dSLR baseplate



## ⑤ ASSEMBLY COMPLETED!

NOW GO SHOOT!

